

MartinLogan Outdoor Living Crown CDi 1000 Preset Upload Instructions

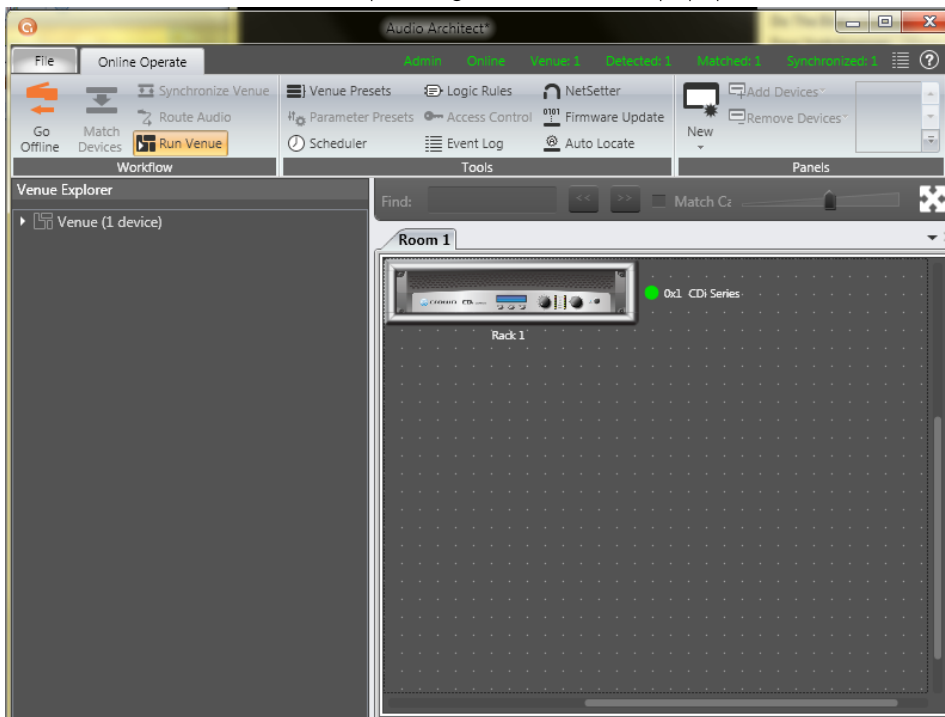
These instructions are to be used to upload a device file for Outdoor Living speakers into a Crown CDi1000.

Requirements:

- Crown amplifier – CDi1000 is assumed, but presets may work on other CDi models as well.
- RCA to Euroblock mono input adapter (included with Crown amplifier purchased from MartinLogan)
- PC\laptop with Audio Architect software installed
- USB cable to connect computer to amplifier.
- Most recent approved device file software. This will be available for download on MartinLogan.com. As of March 03, 2017 this is: "Landscape CDi Presets REV_02 2017_Mar_03.CDi.device"

Procedure:

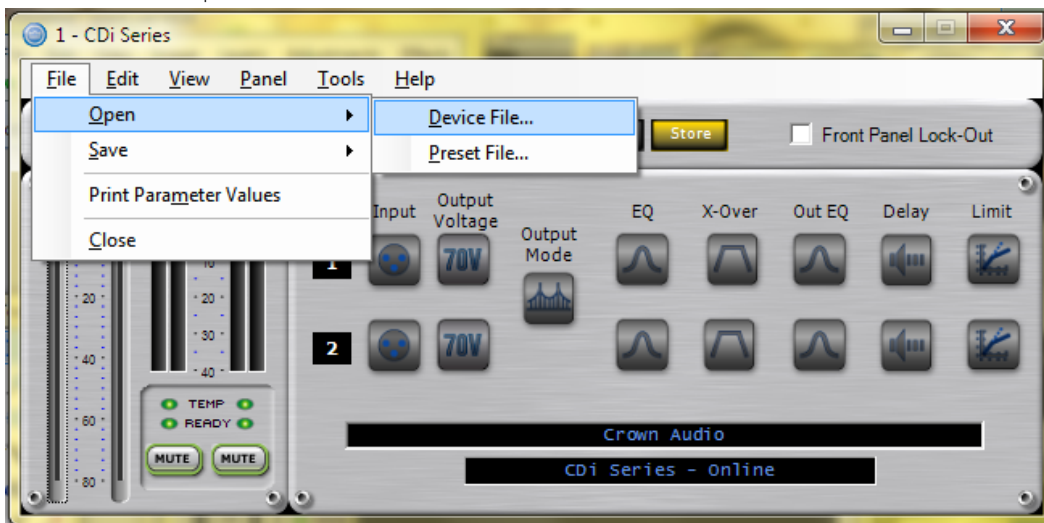
1. Download, install, and run HiQnet Audio Architect™ by Harman:
http://audioarchitect.harmanpro.com/en-US/audio-architect-HiQnet_software
2. Connect amplifier to computer via USB cable and turn on
3. Wait for software to discover amplifier (ignore\close other popup windows)



4. Double-click to open amplifier



5. Click 'File' then 'open' > 'device File'



6. Locate and Open device file.
7. Make sure Device is Online
8. Double click and Open amplifier again.
9. Be sure to Store file on amplifier
10. Disconnect USB cable.



11. Verifying and selecting preset. **NOTE:** 840ST100 is the default preset for amplifier from MartinLogan.
- Press 'Sel/Enter' button on amp.
 - 'preset' flashes – press button again – 'preset block flashes'
 - Press up/down buttons to get to 'DSP OFF' preset, then press 'Prev/Up' button once. Confirm that "rev" number is the same as the device file.
 - Identify proper Preset Name to select (see following chart).
 - Scroll to correct Preset Name and press 'Sel/Enter' button.

INSTALLATION USING LONG WIRES (100 feet or longer)							
	CHANNEL #1 ON AMP	CHANNEL #2 ON AMP	PRESETS ON CROWN AMP	PRESET NAME	POWER OUTPUT	SET DIAL ON SATELLITE SPEAKER	
	Wire Product to Channel #1 on the Crown Amplifier	Wire Product to Channel #2 on the Crown Amplifier	Select the Preset number on the Crown Amplifier specified below		Signal level provided to subwoofer / speakers	Remove the cap from the rear of the satellite speaker and position the dial to the appropriate wattage setting below	
DYNAMO OUTDOOR SUB 100 or DYNAMO OUTDOOR SUB 120 plus OUTDOOR SAT 40 or OUTDOOR SAT 60 satellite speakers	SUB 100	SAT 40	Preset 2 for SUB 100 and SAT 40	40SAT100	8 ohm / 70V hybrid	Number of Speakers: 1-12	30W (or less)
	SUB 100	SAT 60	Preset 3 for SUB 100 and SAT 60	60SAT100	8 ohm / 70V hybrid	Number of Speakers: 13-24	15W (or less)
	SUB 120	SAT 40	Preset 4 for SUB 120 and SAT 40	40SAT120	8 ohm / 70V hybrid	Number of Speakers: 25-50	7.5W (or less)
	SUB 120	SAT 60	Preset 5 for SUB 120 and SAT 60	60SAT120	8 ohm / 70V hybrid	Number of Speakers: 50-100	3.8W (or less)
NO subwoofer and OUTDOOR SAT 40 or OUTDOOR SAT 60 satellite speakers	SAT 40	SAT 40	Preset 10 for SAT 40 in Mono	40SAT_MO	NA / 70V	Number of Speakers: 1-12	30W (or less)
	SAT 60	SAT 60	Preset 11 for SAT 60 in Mono	60SAT_MO	NA / 70V	Number of Speakers: 13-24	15W (or less)
	SAT 40	SAT 40	Preset 12 for SAT 40 in Stereo	40SAT_ST	NA / 70V	Number of Speakers: 25-50	7.5W (or less)
	SAT 60	SAT 60	Preset 13 for SAT 60 in Stereo	60SAT_ST	NA / 70V	Number of Speakers: 50-100	3.8W (or less)

INSTALLATION USING SHORT WIRES (less than 100 feet) FOR 4 OR FEWER SPEAKERS							
	CHANNEL #1 ON AMP	CHANNEL #2 ON AMP	PRESETS ON CROWN AMP	PRESET NAME	POWER OUTPUT	SET DIAL ON SATELLITE SPEAKER	
	Wire Product to Channel #1 on the Crown Amplifier	Wire Product to Channel #2 on the Crown Amplifier	Select the Preset number on the Crown Amplifier specified below		Signal level provided to subwoofer / speakers	Remove the cap from the rear of the satellite speaker and position the dial to the appropriate wattage setting below	
DYNAMO OUTDOOR SUB 100 or DYNAMO OUTDOOR SUB 120 plus 4 or less OUTDOOR SAT 40 or OUTDOOR SAT 60 satellite speakers	SUB 100	SAT 40	Preset 6 for SUB 100 and SAT 40	840ST100	8 ohm / 8ohm	8ohms	
	SUB 100	SAT 60	Preset 7 for SUB 100 and SAT 60	860ST100	8 ohm / 8ohm		
	SUB 120	SAT 40	Preset 8 for SUB 120 and SAT 40	840ST120	8 ohm / 8ohm		
	SUB 120	SAT 60	Preset 9 for SUB 120 and SAT 60	860ST120	8 ohm / 8ohm		
No Subwoofer and 4 or less OUTDOOR SAT 40 or OUTDOOR SAT 60 satellite speakers	SAT 40	SAT 40	Preset 14 for SAT 40 in mono	840STMO	NA / 8ohm	8ohms	
	SAT 60	SAT 60	Preset 15 for SAT 60 in mono	860STMO	NA / 8ohm		
	SAT 40	SAT 40	Preset 16 for SAT 40 in stereo	840SATST	NA / 8ohm		
	SAT 60	SAT 60	Preset 17 for SAT 60 in stereo	860SATST	NA / 8ohm		

12. Press power button to turn power off.